

Provent™

Professional Sleep Apnea Therapy

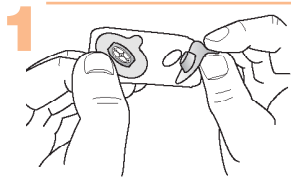
Tips and Techniques

1. Apply the devices just before you go to sleep.
2. It is important to achieve a complete seal around each nostril so no air escapes under the adhesive.
3. Avoid multiple re-applications of the device. If the adhesive no longer feels sticky, dispose of the device and apply a new one.
4. You may have some overlap of the adhesives when wearing devices in both nostrils. The adhesive should not cover the plastic portion of the device in the other nostril.
5. Breathe through your mouth as you fall asleep if mouth breathing is more comfortable than nasal breathing. You will naturally begin breathing through your nose when you fall asleep.
6. Each device is designed for one night's use. Do not attempt to re-use the same device.

In the event of a medical emergency, please dial 911. For any other questions or to order additional devices, please call 1(866)SLP-WELL or 1(866)757-9355.

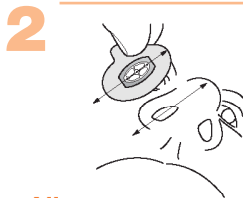
Please refer to the Instructions for Use located inside the Provent Therapy container for important product and use information, including information about whether or not Provent Therapy is right for you.

Directions for Provent™ Therapy Application



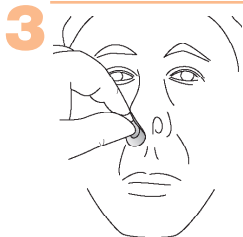
Peel

Peel off the device



Align

Align with your nostril



Apply

Apply and press down gently on adhesive to create a seal



Check

Check for proper fit and make sure nostrils are completely covered



Breathe

Breathe through your mouth until you fall asleep



VENTUS MEDICAL

1301 Shoreway Road, Suite 425

Belmont, CA 94002

Ph 650.632.4199 F 650.632.4198

www.ventusmedical.com