

### INTRODUCING...

### Provent™ Professional Sleep Apnea Therapy A New and Innovative Treatment for OSA

#### Indications For Use

Provent Professional Sleep Apnea Therapy is indicated for the treatment of obstructive sleep apnea (OSA).

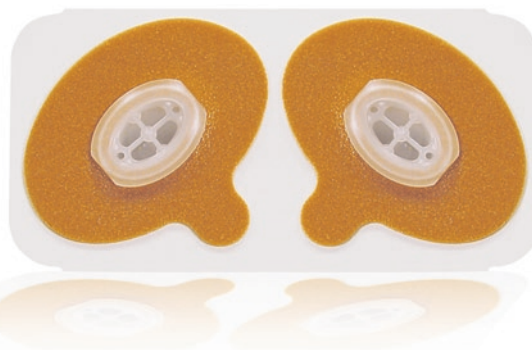
#### Safety Information

As with any OSA treatment, there are risks associated with device use and the device is not effective in all patients. Please refer to the Provent Instructions for Use for a full discussion of the indications for use, contraindications, warnings, precautions, adverse events, and clinical trial data gathered on use of the Provent device.

#### Contraindications

The Provent nasal device should not be used if my patient has any of the following conditions:

- A severe breathing disorder (including respiratory muscle weakness, bullous lung disease, bypassed upper airway, pneumothorax, pneumomediastinum, etc.).
- Severe heart disease (including heart failure).
- Pathologically low blood pressure.
- An acute upper respiratory (including nasal, sinus or middle ear) inflammation or infection, or perforation of the ear drum.



(Actual Size)

#### Provent Professional Sleep Apnea Therapy is:

- Clinically proven to be effective
- Easy to use every night
- Discreet
- Powered by your own breathing (no electricity required)
- Simple and convenient so it fits your lifestyle
- Disposable

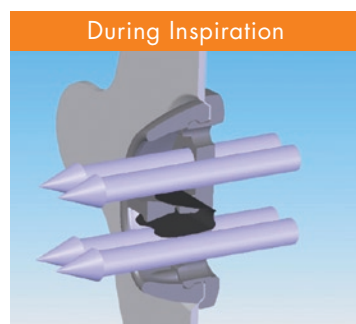
#### What is Provent?

Provent™ is a simple and easy-to-use treatment for OSA that eliminates the need for the cumbersome tubing, mask and machine of CPAP (continuous positive airway pressure) therapy.

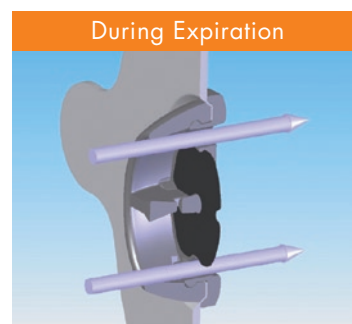
The Provent nasal device is placed just inside the nostrils and is held in place by a hypoallergenic adhesive. Simply discard the single use device after you wake up.

#### How Provent Works

Provent uses a novel valve design. On inhalation, the valve opens allowing nearly unobstructed airflow. On exhalation, the valve closes and air passing through the nose is directed through two small air channels. The expiratory resistance helps maintain an open airway during sleep.



The valve opens, allowing nearly unobstructed airflow.

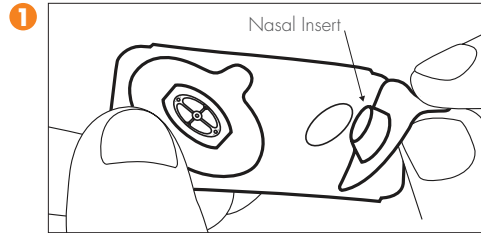


The valve closes, restricting airflow through two small air channels to increase expiratory airway pressure.

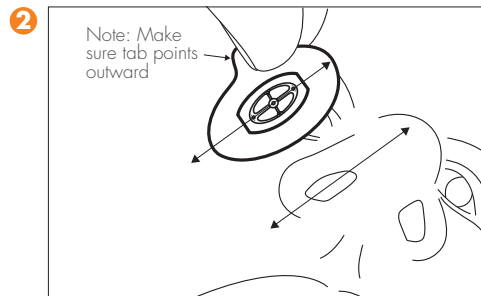
## How to Use Provent During a Sleep Study

Provent can be used during a sleep study to confirm effectiveness. The following provides step by step directions for applying Provent to a patient during a sleep study.

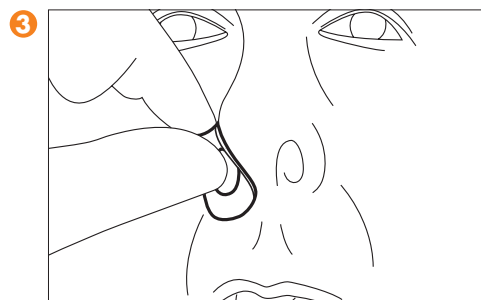
### Directions For Use



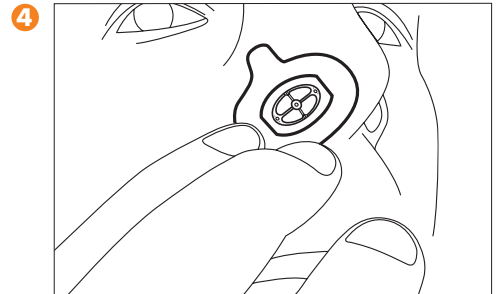
1 Peel off the paper backing from the adhesive.



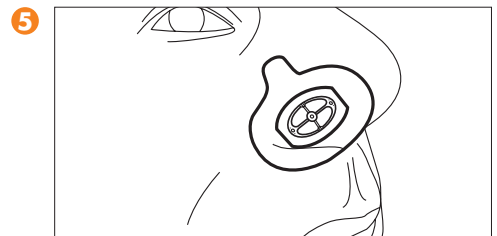
2 Align the long axis of nasal insert with the long axis of one of the nostrils to ensure a good seal. Make sure the side tab points outward.



3 Once aligned, place the nasal insert into the nostril. Be sure to stretch the lower nostril area as if shaving the area above the upper lip. This will help ensure a good seal.



4 Gently press down around the adhesive to ensure a good seal. Check to make sure there are no folds or creases which may compromise the seal.



5 Once in place, the adhesive tab should now be adhered as shown. Repeat steps 1-4 for the other nostril.

When Provent has been placed in both nostrils, use a mirror to check that both are properly fitted. Some overlap of the adhesive is common, but make sure the adhesive does not cover either of the plastic nasal inserts.

Repeated repositioning of Provent will weaken the adhesive and reduce the effectiveness of the device. If the adhesive no longer feels sticky, dispose of the device and apply a new one.

6 Patients should be instructed to breathe through their mouth while falling asleep in the event that mouth breathing is more comfortable than nasal breathing through the device.

### FAQ's

#### How can I tell if the patient has a seal?

Have the patient gently cover both of the plastic valves with her fingers. Have her gently exhale through her nose. If this completely prevents air flow, the device has formed a proper seal. If not, have her remove and reapply the device, making sure that all of the adhesive is smooth and conforms to her nostrils. If a seal cannot be achieved discard the device and try a new one.

#### The patient states that breathing through his nose feels uncomfortable. Can he switch to mouth breathing?

Yes. Breathing through the mouth should have no impact on the product's effectiveness when the patient is sleeping. Most people naturally shift to nasal breathing when asleep. Instruct the patient to fall asleep with mouth open.

#### What happens if the patient needs to sneeze while wearing Provent?

If the patient needs to sneeze, instruct him to do so through his mouth. After a sneeze, recheck Provent to make sure it is still sealed. If not, replace with a new device.



VENTUS MEDICAL, INC.  
1301 Shoreway Road, Suite 425  
Belmont, CA 94002

United States and foreign patents pending

Provent is a trademark of Ventus Medical, Inc.  
© 2008 Ventus Medical, Inc. All rights reserved.

10-08 - MSM0018-01\_A